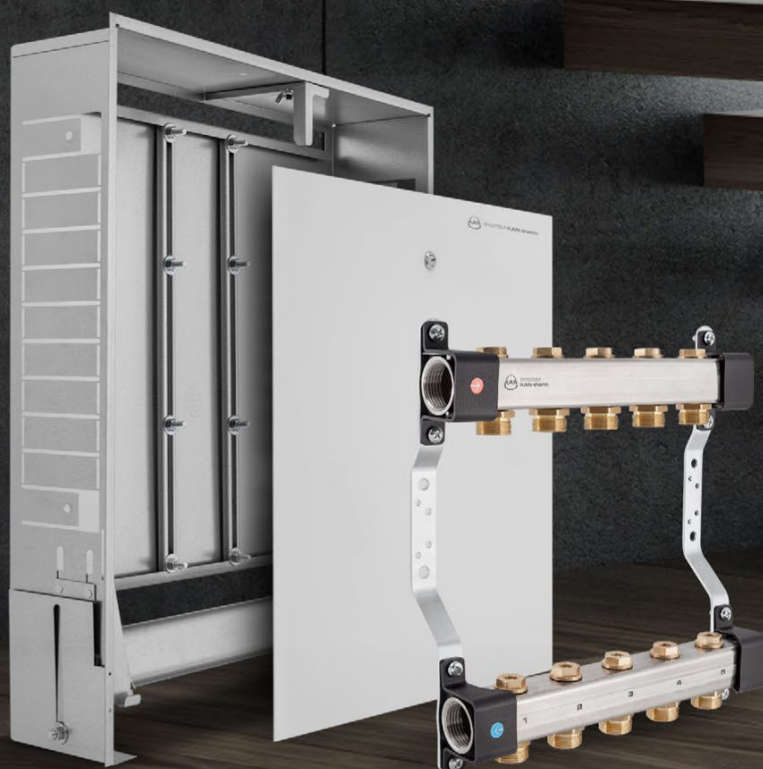




KAN-therm
MULTISYSTEM

> 35 | years of experience
on the installation
market



KAN-therm
Manifolds
and cabinets

supplementary elements

QUALITY AND RELIABILITY

Install the **future**

EN 25/04

Table of contents

Cabinets and manifolds - supplementary elements

Fittings for union connections	3
Fittings for connecting Ø15 nickel-plated pipes	5
General purpose fittings	6
Manifolds	8
Manifold accessories	13
Installation cabinets	20
Installation accessories and fastening elements	23

Cabinets and manifolds - supplementary elements

Fittings for union connections

Brass male coupling

GROUP: A

Size	*	Code			UM
G1/2"		1709174003	20	300	pc.
G3/4"		1709174001	10	150	pc.
G1"		1709174000	10	100	pc.

Note:

The element is compatible with adapters for PEXC and PERT pipes, connectors for PERTAL pipes, as well as nuts and sleeves for copper pipes.



Brass nickel-plated male coupling

GROUP: A

Size	*	Code			UM
G1/2"	*	1709174004	10	100	pc.

Note:

The element is compatible with adapters for PEXC and PERT pipes, connectors for PERTAL pipes, as well as nuts and sleeves for copper pipes. Do not use for potable water.



Brass male reducing coupling

GROUP: A

Size	*	Code			UM
G3/4" / G1/2"		1709174013	10	150	pc.
G1" / G3/4"		1709174009	10	100	pc.

Note:

The element is compatible with adapters for PEXC and PERT pipes, connectors for PERTAL pipes, as well as nuts and sleeves for copper pipes.



Brass male elbow 90°

GROUP: A

Size	*	Code			UM
G1/2"	***	1709068008	20	200	pc.
G3/4"		1709068010	10	120	pc.

Note:

The element is compatible with adapters for PEXC and PERT pipes, as well as connectors for PERTAL pipes.



Brass male/female elbow 90°

GROUP: A

Size	*	Code			UM
G1/2"		1709068004	10	150	pc.
G3/4"	***	1709068006	10	80	pc.
G1"	***	1709068018	5	50	pc.

Note:

The element is compatible with adapters for PEXC and PERT pipes, as well as connectors for PERTAL pipes.



 coil
  bar
  pipes in tube
  bag
  carton box
  pallet
  new
  available soon

* custom-made - lead time max 4 weeks | ** availability as agreed | *** while stock lasts



Brass male tee

GROUP: A

Size	*	Code			UM
G1/2"	***	1709257009	10	120	pc.
G3/4"	***	1709257011	5	70	pc.

Note:

The element is compatible with adapters for PEXC and PERT pipes, as well as connectors for PERTAL pipes.



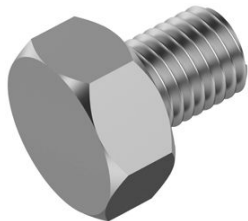
Plastic male stop end for leak tests

GROUP: A

Size	*	Code			UM
G1/2"		1700250001	20	300	pc.

Note:

The plastic stop end is intended only for the leak test of the installation.
The stop end has its O-Ring seal.



Mounting bolt

GROUP: A

Size [mm]	*	Code			UM
M8		1700183012	100	2000	pc.

Note:

It connects the mounting plate with wallplate elbows and tees.

coil
 bar
 pipes in tube
 bag
 carton box
 pallet
 new
 available soon

* custom-made - lead time max 4 weeks | ** availability as agreed | *** while stock lasts

Fittings for connecting Ø15 nickel-plated pipes

Eurocone adapter for Cu Ø15 pipe

GROUP: A

Size	*	Code			UM
G¾"		1709043005	15	150	pc.

Note:

The adapter is compatible with fittings for union connections with male threads and radiator combined valves.



Universal eurocone adapter for Ø15 pipes

GROUP: A

Size [mm]	*	Code			UM
15 G¾"		1709043010	15	150	pc.

Note:

Universal adapter, enabling connection of metal pipes (e.g. copper, nickel-plated copper, KAN-therm Steel and Inox system pipes) with a diameter of 15 mm. The construction of the adapter allows for its multiple use.



Eurocone adapter for Cu Ø15 pipe

GROUP: A

Size	*	Code			UM
G½"		1709043003	20	300	pc.

Note:

The adapter is compatible with nipples and fittings for union connections.



Compression for Cu Ø15 pipes

GROUP: A

Size [mm]	*	Code			UM
15 G½"		1709043011	20	300	pc.

Note:

The compression fitting is compatible with 1709040000.



Nickel-plated male/female connection body for Ø15 pipe

GROUP: A

Size [mm]	*	Code			UM
15 G½"		1709040000	20	200	pc.

Note:

To be used together with a compression for Cu Ø15 mm pipe (1709043011) when connecting radiators with female ½" thread using fittings with nickel-plated Cu Ø15 mm pipes.



 coil  bar  pipes in tube  bag  carton box  pallet  new  available soon

* custom-made - lead time max 4 weeks | ** availability as agreed | *** while stock lasts

General purpose fittings



Brass male/female union

GROUP: A

Size	*	Code		UM
G½"		1709271005	100	pc.
G¾"		1709271006	60	pc.
G1"		1709271004	30	pc.



Brass male/female angle union

GROUP: A

Size	*	Code		UM
G½"		1709271002	70	pc.



Brass female elbow 90°

GROUP: A

Size	*	Code		UM
G¾"	***	1709068002	5 50	pc.
G1"		1709068000	- 50	pc.



Brass female tee

GROUP: A

Size	*	Code		UM
G½"	***	1709257002	5 70	pc.
G¾"	***	1709257003	5 50	pc.
G1"		1709257014	- 30	pc.



Brass female coupling

GROUP: A

Size	*	Code		UM
G½"		1709245010	20 200	pc.
G¾"		1709245012	10 120	pc.
G1"	***	1709245003	10 80	pc.



Brass female reducing coupling

GROUP: A

Size	*	Code		UM
G¾" / G½"		1709245014	10 120	pc.

coil
 bar
 pipes in tube
 bag
 carton box
 pallet
 new
 available soon

* custom-made - lead time max 4 weeks | ** availability as agreed | *** while stock lasts

Brass male/female reducing coupling

GROUP: A

Size	*	Code			UM
G3/4" / G1/2"		1709220007	20	200	pc.
G1" / G1/2"		1709220011	10	200	pc.
G1" / G3/4"		1709220003	10	120	pc.



Brass female stop end

GROUP: A

Size	*	Code			UM
G1/2"		1709250001	20	500	pc.
G3/4"		1709250002	20	300	pc.



Plastic male stop end for leak tests

GROUP: A

Size	*	Code			UM
G1/2"		1700250001	20	300	pc.

Note:

The plastic stop end is intended only for the leak test of the installation.
The stop end has its O-Ring seal.



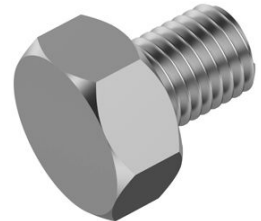
Mounting bolt

GROUP: A

Size [mm]	*	Code			UM
M8		1700183012	100	2000	pc.

Note:

It connects the mounting plate with wallplate elbows and tees.



 coil  bar  pipes in tube  bag  carton box  pallet  new  available soon

* custom-made - lead time max 4 weeks | ** availability as agreed | *** while stock lasts

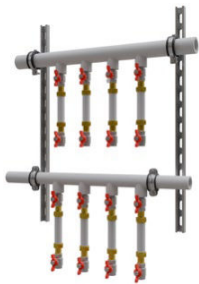
Manifolds



Residential manifold set

GROUP: E

Number of circuits (H×W×D) [mm]	*	Code		UM
2 (1280×375×264)	**	1343183013	1	pc.
3 (1280×375×264)	**	1343183014	1	pc.
4 (1280×475×264)	**	1343183015	1	pc.
5 (1280×575×264)	**	1343183016	1	pc.
6 (1280×675×264)	**	1343183017	1	pc.
7 (1280×775×264)	**	1343183018	1	pc.
8 (1280×875×264)	**	1343183019	1	pc.



Water module of the residential manifold set

GROUP: E

Number of circuits (H×W×D) [mm]	*	Code			UM
2 (727×377×169)	*	1343183035	-	6	pc.
3 (727×447×169)	*	1343183036	1	23	pc.
4 (727×547×169)	*	1343183037	1	23	pc.
5 (727×647×169)	*	1343183038	1	23	pc.
6 (727×747×169)	*	1343183039	1	13	pc.
7 (727×847×169)	*	1343183040	1	13	pc.
8 (727×947×169)	*	1343183041	1	13	pc.



Central heating module of the residential manifold set

GROUP: E


Number of circuits (H×W×D) [mm]	*	Code			UM
2 (720×377×268)	*	1343183042	1	23	pc.
3 (727×447×268)	*	1343183043	1	23	pc.
4 (727×547×268)	*	1343183044	1	23	pc.
5 (727×647×268)	*	1343183045	1	23	pc.
6 (727×747×268)	*	1343183046	1	13	pc.
7 (727×847×268)	*	1343183047	1	13	pc.
8 (727×947×268)	*	1343183048	1	13	pc.

coil
 bar
 pipes in tube
 bag
 carton box
 pallet
 new
 available soon

* custom-made - lead time max 4 weeks | ** availability as agreed | *** while stock lasts

InoxFlow manifold without accessories (RBB series)

GROUP: E

Number of circuits (H×W×D) [mm]	*	Code		UM
2 (325×140×84)		1316156000	1	pc.
3 (325×190×84)		1316156001	1	pc.
4 (325×240×84)		1316156002	1	pc.
5 (325×290×84)		1316156003	1	pc.
6 (325×340×84)		1316156004	1	pc.
7 (325×390×84)		1316156005	1	pc.
8 (325×440×84)		1316156006	1	pc.
9 (325×490×84)		1316156007	1	pc.
10 (325×540×84)		1316156008	1	pc.
11 (325×590×84)		1316156009	1	pc.
12 (325×640×84)		1316156010	1	pc.

Note:

The manifold has holes with female G½" thread as outlets for individual circuits with a spacing of 50 mm.

Manifold supply - upper beam.

Return from manifold - lower beam.

The beams have female G1" thread as installation connections and female G½" thread in the upper surface to mount air vents.

The supply and return beam have G1" stop end mounted on one side.



MARKING OF MANIFOLD SERIES



R or U

B, N, S, V or F

T, A or P

Radiator
manifolds for central heating
and drinking water

Underfloor heating
manifolds for
underfloor heating

**equipment of top
or bottom beams**

Basic
no accessories

Nipples

Servomotor valves

Valves
shut-off or balancing valves

Flowmeters

**additional
accessories**

Top
air-vent on top
of the beam

Axis
air-vent in the axis
of the beam

Pump
mixing unit


 coil  bar  pipes in tube  bag  carton box  pallet  new  available soon

* custom-made - lead time max 4 weeks | ** availability as agreed | *** while stock lasts



InoxFlow manifold with union nipples (RNN series)

GROUP: E

Number of circuits (H×W×D) [mm]	*	Code		UM
2 (325×140×84)		1316158000	1	pc.
3 (325×190×84)		1316158001	1	pc.
4 (325×240×84)		1316158002	1	pc.
5 (325×290×84)		1316158003	1	pc.
6 (325×340×84)		1316158004	1	pc.
7 (325×390×84)		1316158005	1	pc.
8 (325×440×84)		1316158006	1	pc.
9 (325×490×84)		1316158007	1	pc.
10 (325×540×84)		1316158008	1	pc.
11 (325×590×84)		1316158009	1	pc.
12 (325×640×84)		1316158010	1	pc.

Note:

The manifold works with G¾" connection adapters and G¾" connectors.

Outlets for individual circuits have 50 mm spacing.

Manifold supply - upper beam.

Return from manifold - lower beam.

The beams have female G1" thread as installation connections and female G½" thread in the upper surface to mount air vents.

The supply and return beam have G1" stop end mounted on one side.

MARKING OF MANIFOLD SERIES



|
R or U **B,N,S,V or F** **T, A or P**

Radiator
manifolds for central heating
and drinking water

Underfloor heating
manifolds for
underfloor heating

equipment of top or bottom beams

Basic
no accessories

Nipples

Servomotor valves

Valves
shut-off or balancing valves

Flowmeters

additional accessories

Top
air-vent on top
of the beam

Axis
air-vent in the axis
of the beam

Pump
mixing unit

 coil
  bar
  pipes in tube
  bag
  carton box
  pallet
  new
  available soon

* custom-made - lead time max 4 weeks | ** availability as agreed | *** while stock lasts

InoxFlow manifold with shut-off valves (RVV series) - spacing 50 mm

GROUP: E

Number of circuits (H×W×D) [mm]	*	Code		UM
2 (325×140×84)		1316161000	1	pc.
3 (325×190×84)		1316161001	1	pc.
4 (325×240×84)		1316161002	1	pc.
5 (325×290×84)		1316161003	1	pc.
6 (325×340×84)		1316161004	1	pc.
7 (325×390×84)		1316161005	1	pc.
8 (325×440×84)		1316161006	1	pc.
9 (325×490×84)		1316161007	1	pc.
10 (325×540×84)		1316161008	1	pc.
11 (325×590×84)		1316161009	1	pc.
12 (325×640×84)		1316161010	1	pc.

Note:

The manifold works with G $\frac{3}{4}$ " connection adapters and G $\frac{3}{4}$ " connectors.
 Outlets for individual circuits have 50 mm spacing.
 Each of the circuits has its shut-off valve.
 Manifold supply - upper beam.
 Return from manifold - lower beam.
 Beams have G1" female thread.
 The beams are not equipped with stop ends.



MARKING OF MANIFOLD SERIES



|
R or U **B,N,S,V or F** **T, A or P**

Radiator
 manifolds for central heating
 and drinking water

Underfloor heating
 manifolds for
 underfloor heating

equipment of top or bottom beams

Basic
 no accessories

Nipples

Servomotor valves

Valves
 shut-off or balancing valves

Flowmeters

additional accessories

Top
 air-vent on top
 of the beam

Axis
 air-vent in the axis
 of the beam

Pump
 mixing unit

coil bar pipes in tube bag carton box pallet new available soon

* custom-made - lead time max 4 weeks | ** availability as agreed | *** while stock lasts



InoxFlow manifold with shut-off valves (RVV series) - span 100 mm

GROUP: E

	Number of circuits (H×W×D) [mm]	*	Code		UM
N	2 (337×190×85)		1316161029	1	pc.
N	3 (337×290×85)		1316161030	1	pc.
N	4 (337×390×85)		1316161031	1	pc.
N	5 (337×490×85)		1316161032	1	pc.
N	6 (337×590×85)		1316161033	1	pc.

Note:

The manifold works with G $\frac{3}{4}$ " eurocone adapters and G $\frac{3}{4}$ " connectors.
 Outlets for individual circuits have 100 mm spacing.
 Each of the circuits has its shut-off valve.
 Manifold supply - upper beam.
 Return from manifold - lower beam.
 Beams have G1" female thread.
 The beams are not equipped with stop ends.

MARKING OF MANIFOLD SERIES



U | S | F | P
 R or U B,N,S,V or F T, A or P

Radiator
 manifolds for central heating
 and drinking water
Underfloor heating
 manifolds for
 underfloor heating

equipment of top or bottom beams

Basic
 no accessories

Nipples

Servomotor valves

Valves
 shut-off or balancing valves

Flowmeters

additional accessories

Top
 air-vent on top
 of the beam

Axis
 air-vent in the axis
 of the beam

Pump
 mixing unit



coil bar pipes in tube bag carton box pallet new available soon

* custom-made - lead time max 4 weeks | ** availability as agreed | *** while stock lasts

Manifold accessories

Steel beam 1 1/4" with hole for air vent - 50 mm spacing

GROUP: E

Number of circuits (W) [mm]	*	Code			UM
2 (126)		1300154238	1	8	pc.
3 (176)		1300154239	1	8	pc.
4 (226)		1300154240	1	8	pc.
5 (276)		1300154241	1	8	pc.
6 (326)		1300154242	1	8	pc.
7 (376)		1300154243	1	8	pc.
8 (426)		1300154244	2	8	pc.
9 (476)		1300154245	1	8	pc.
10 (526)		1300154246	1	8	pc.
11 (576)		1300154247	1	8	pc.
12 (625)		1300154248	1	8	pc.



Note:

The manifold beam has outlets for individual circuits with female G1/2" thread and spacing 50 mm.
The beams have female G1" thread as installation connections and female G1/2" thread in the upper surface to mount air vents.



Steel manifold beam 1 1/4" - spacing 100 mm

GROUP: E

Number of circuits (W) [mm]	*	Code			UM
2 (176)		1347154022	2	12	pc.
3 (276)		1300154128	2	12	pc.
4 (376)		1300154129	2	12	pc.
5 (476)		1300154130	2	12	pc.
6 (576)		1347154023	2	12	pc.

Note:

Manifold beams have outlets for individual circuits with female G1/2" thread and spacing 100 mm.
Beams have female G1" thread as installation connections.



Brass male/female half union with flat gasket

GROUP: E

Size	*	Code			UM
1 1/4" / 3/4"	*	1300105001	5	70	pc.
1 1/4" / 1"	*	1300105000	5	50	pc.

Note:

Use the half union for 91 series manifolds.





 coil
  bar
  pipes in tube
  bag
  carton box
  pallet
  new
  available soon

* custom-made - lead time max 4 weeks | ** availability as agreed | *** while stock lasts



Stainless steel beam with hole for air vent - spacing 50 mm



GROUP: E

Number of circuits (W) [mm]	*	Code			UM
2 (140)		1300154285	1	8	pc.
3 (190)		1300154287	1	8	pc.
4 (240)		1300154289	1	8	pc.
5 (290)		1300154291	1	8	pc.
6 (340)		1300154293	1	8	pc.
7 (390)		1300154295	1	8	pc.
8 (440)		1300154297	1	8	pc.
9 (490)		1300154299	1	8	pc.
10 (540)		1300154301	1	8	pc.
11 (590)		1300154303	1	8	pc.
12 (640)		1300154305	1	8	pc.



Stainless steel beam - spacing 50 mm



GROUP: E

Number of circuits (W) [mm]	*	Code			UM
2 (140)		1300154271	1	8	pc.
3 (190)		1300154272	1	8	pc.
4 (240)		1300154273	1	8	pc.
5 (290)		1300154274	1	8	pc.
6 (340)		1300154275	1	8	pc.
7 (390)		1300154276	1	8	pc.
8 (440)		1300154277	1	8	pc.
9 (490)		1300154278	1	8	pc.
10 (540)		1300154279	1	8	pc.
11 (590)		1300154280	1	8	pc.
12 (640)		1300154281	1	8	pc.



Stainless steel beam - spacing 100 mm

GROUP: E

Number of circuits (W) [mm]	*	Code			UM
2 (190)		1300154309	1	8	pc.
3 (290)		1300154310	1	8	pc.
4 (390)		1300154311	1	8	pc.
5 (490)		1300154312	1	8	pc.
6 (590)		1300154313	1	8	pc.



Manifold bracket

GROUP: E

	*	Code			UM
	*	1700029001	2	50	pc.

Note: Manifold beams spacing in axes 235 mm.

 coil
  bar
  pipes in tube
  bag
  carton box
  pallet
  new
  available soon

* custom-made - lead time max 4 weeks | ** availability as agreed | *** while stock lasts

Adjustable manifold bracket

GROUP: E

Size	*	Code			UM
		1300029005	1	15	pc.

Note:

It makes it possible to vertical adjustment of the manifold beams spacing.
Adjustment in the range 235 - 399 mm, each 41 mm.



Universal nipple with O-Ring sealing

GROUP: E

Size	*	Code			UM
G $\frac{3}{4}$ " / G $\frac{1}{2}$ "		1300174003	20	200	pc.
G $\frac{1}{2}$ "		1300174043	20	200	pc.

Note:

Use 1300174003 nipple for InoxFlow RNN and RVV manifolds, as well as under control valves of manifolds UVN, UVS, UVST and USVP.
1300174003 nipples work with G $\frac{3}{4}$ " connection adapters.
1300174043 nipples work with G $\frac{1}{2}$ " connection adapters.



Nipple for manifold series 82

GROUP: E

Size	*	Code			UM
G $\frac{1}{2}$ "		1300174020	20	200	pc.

Note:

The nipple is equipped with O-Ring seals on both sides.



Brass male/female reducer for manifold

GROUP: E

Size	*	Code			UM
G1" / G $\frac{1}{2}$ "		1300220002	10	120	pc.
G1" / G $\frac{3}{4}$ "		1300220003	10	120	pc.

Note:

The reducer has an O-Ring seal built-in.
When assembling in KAN-therm manifolds, additional sealing is not required.



Nickel-plated male/female reducer for manifold

GROUP: E

Size	*	Code			UM
G1" / G $\frac{1}{2}$ "		1300220008	10	120	pc.
G1" / G $\frac{3}{4}$ "		1300220009	10	120	pc.

Note:

The reducer has an O-Ring seal built-in.
When assembling in KAN-therm manifolds, additional sealing is not required.
Do not use for potable water.



coil
 bar
 pipes in tube
 bag
 carton box
 pallet
 new
 available soon

* custom-made - lead time max 4 weeks | ** availability as agreed | *** while stock lasts



Brass male stop end

GROUP: E

Size	*	Code			UM
G½"		1709250004	20	300	pc.

Note:

The stop end has its O-Ring seal. Use a hex12 Allen wrench for tightening.



Nickel-plated male stop end

GROUP: E

Size	*	Code			UM
G½"		1300250020	20	300	pc.

Note:

The stop end has an O-Ring. Use a hex12 Allen wrench for tightening. Do not use for potable water.



Brass male stop end

GROUP: E

Size	*	Code			UM
G¾"		1300250019	20	300	pc.
G1"		1300025002	10	150	pc.

Note:

The stop end has an O-Ring seal built-in.
When assembling in KAN-therm manifolds, additional sealing is not required.



Nickel-plated male stop end

GROUP: E

Size	*	Code			UM
G¾"		1300250021	20	300	pc.
G1"		1300025005	10	120	pc.

Note:

The stop end has an O-Ring seal built-in.
When assembling in KAN-therm manifolds, additional sealing is not required.
Do not use for potable water.



O-Ring seal

GROUP: E

Size [mm]	*	Code		UM
17×2,0	*	1700182001	15000	pc.
18,3×2,4	*	1700182002	100	pc.
24×2,0	*	1700182004	100	pc.
28×3,0	*	1700182005	100	pc.

Note:

Use O-Ring, code 1700182002, for nipples, code 1300174003 and 1300174043, in brass manifolds.
Use O-Ring, code 1700182001, for stop ends, code 1709250004 and 1300250020.
Use O-Ring, code 1700182004, for stop ends, code 1300250019 and 1300250021.
Use O-Ring, code 1700182005, for stop ends, code 1300025002 and 1300025005, as well as reducer, code 1300220002, 1300220003, 1300220008 and 1300220009.

coil
 bar
 pipes in tube
 bag
 carton box
 pallet
 new
 available soon

* custom-made - lead time max 4 weeks | ** availability as agreed | *** while stock lasts

Male nipple with gasket

GROUP: E

Size	*	Code			UM
G1"		1300174028	10	100	pc.

Note:
Use to connect manifolds with extension elements.



Male nickel-plated nipple with gasket

GROUP: E

Size	*	Code			UM
G1"		1300174042	10	100	pc.

Note:
Do not use for potable water. Use to connect manifolds with extension elements.



Tee with gasket

GROUP: E


Size	*	Code			UM
G1" / G½" / G½"		1300257001	5	70	pc.

Note:
Use the element in manifolds to extend a manifold by one circuit or add an air vent and drain valve.



Nickel-plated tee with gasket

GROUP: E

Size	*	Code			UM
G1" / G½" / G½"		1300257003	5	70	pc.

Note:
Use the element in manifolds to extend a manifold by one circuit or add an air vent and drain valve.
Do not use for potable water.



Straight valve set SET-P

GROUP: E

Size	*	Code			UM
G1" / G1"		1300183006	1	20	set

Note:
1" valve set with a union, working with KAN-therm InoxFlow and brass manifolds without additional sealing.
Use when the manifold is supplied from the side.



 coil  bar  pipes in tube  bag  carton box  pallet  new  available soon

* custom-made - lead time max 4 weeks | ** availability as agreed | *** while stock lasts



Angle valve set SET-K

GROUP: E

Size	*	Code			UM
G1" / G1"		1300183007	1	20	set

Note:

1" valve set with a union and elbows, working with KAN-therm manifolds without additional sealing. Use when the manifold is supplied from the floor.



Tee with air vent and drain valve

GROUP: E

Size	*	Code			UM
G1"		1300257002	1	20	pc.



Nickel-plated tee with air vent and drain valve

GROUP: E

Size	*	Code			UM
G1"		1300257004	10	80	pc.

Note:

Do not use for potable water.



Manual air vent

GROUP: E

Size	*	Code			UM
G1½"		1300005007	50	500	pc.



Plastic air vent and drain valve

GROUP: E

Size	*	Code			UM
G1½"		1300005003	25	100	pc.

coil
 bar
 pipes in tube
 bag
 carton box
 pallet
 new
 available soon

* custom-made - lead time max 4 weeks | ** availability as agreed | *** while stock lasts

Metal air vent and drain valve

GROUP: E

Size	*	Code			UM
G½"		1300277000	25	100	pc.



Air vent with stop valve

GROUP: E

Size	*	Code			UM
G½"		1300005000	1	25	pc.

Note:

The stop valve makes it possible to remove the air vent without the necessity to drain the installation.
Use tow for sealing.



 coil  bar  pipes in tube  bag  carton box  pallet  new  available soon

* custom-made - lead time max 4 weeks | ** availability as agreed | *** while stock lasts

Installation cabinets



Surface mounted cabinet SWNE

GROUP: D

Size (H×W×D) [mm]	*	Code			UM
585×350×110		1445180002	1	48	pc.
585×450×110		1445180003	1	36	pc.
585×550×110		1445180004	1	32	pc.
585×650×110		1445180000	1	26	pc.
585×800×110		1445180001	1	24	pc.

Features:

- removable, varnished body,
- option to separate the back wall from the casing for comfortable and easy assembly of the manifold and installation components,
- four openings for dowels in the back wall,
- coin lock,
- white cabinet, colour RAL 9016.

STD - a manifold without additional fixtures, with 1" stop end on one side.

KPL - a manifold with SET-K connection valves and a tee with an air vent and a drain valve in a beam.

OPT - a manifold with a built-in vent and drain group, as well as SET-K connection valves.

The drain and vent group should be taken as additional outlet.

Max. number of circuits for RVV manifold (100 mm circuit spacing) are given in brackets.

Code	Type	Brass manifold (Max. number of circuits)		InoxFlow manifold (Max. number of circuits)		
		STD	KPL	STD	KPL	OPT
1445180002	SWNE-4	5	-	5 (3)	-	3 (2)
1445180003	SWNE-6	7	3	7 (4)	2 (-)	5 (3)
1445180004	SWNE-8	9	5	9 (5)	4 (2)	7 (4)
1445180000	SWNE-10	11	7	11 (6)	6 (3)	9 (5)
1445180001	SWNE-13	12	10	12 (6)	9 (5)	12 (6)



Recess mounted cabinet Slim

GROUP: D

Size (H×W×D) [mm]	*	Code			UM
560-660×350×110-160		1445117036	1	42	pc.
560-660×450×110-160		1445117037	1	34	pc.
560-660×580×110-160		1445117038	1	24	pc.
560-660×780×110-160		1445117039	1	20	pc.
560-660×930×110-160		1445117040	1	17	pc.

Features:

- removable, varnished body,
- option to separate the back wall from the casing for comfortable and easy assembly of the manifold and installation components,
- four openings for dowels in the back wall,
- coin lock,
- white cabinet, colour RAL 9016.

STD - a manifold without additional fixtures, with 1" stop end on one side.

KPL - a manifold with SET-K connection valves and a tee with an air vent and a drain valve in a beam.

+GP H - a manifold with an integrated set-point mixing unit.

KPL +GP 3D - a manifold with a vent and drain valve in a beam, as well as connected mixing pump group with a three-way thermostatic valve.

OPT - a manifold with a built-in vent and drain group, as well as SET-K connection valves.

OPT +GP 3D - a manifold with a built-in vent and drain group, as well as connected mixing pump group with a three-way thermostatic valve.

The drain and vent group should be taken as additional outlet.

Max. number of circuits for RVV manifold (100 mm circuit spacing) are given in brackets.



Code	Type	Brass manifold (Max. number of circuits)				InoxFlow manifold (Max. number of circuits)					
		STD	KPL	+GP H	KPL +GP 3D	STD	KPL	OPT	+GP H	KPL +GP 3D	OPT +GP 3D
1445117036	Slim 350	5	-	-	-	5 (3)	-	3 (2)	-	-	-
1445117037	Slim 450	7	3	-	2	7 (4)	2 (-)	5 (3)	-	2 (-)	-
1445117038	Slim 580	10	6	2	4	9 (5)	5 (3)	7 (4)	-	4 (2)	4 (2)
1445117039	Slim 780	12	10	6	8	12 (6)	9 (5)	11 (6)	5 (3)	8 (4)	8 (4)
1445117040	Slim 930	12	12	10	12	12 (6)	12 (6)	12 (6)	8 (4)	11 (6)	11 (6)

coil
 bar
 pipes in tube
 bag
 carton box
 pallet
 new
 available soon

* custom-made - lead time max 4 weeks | ** availability as agreed | *** while stock lasts

Recess mounted cabinet SWPSE

GROUP: D

Size (H×W×D) [mm]	*	Code			UM
560-660×350×110-160		1445117024	1	42	pc.
560-660×450×110-160		1445117013	1	34	pc.
560-660×580×110-160		1445117011	1	24	pc.
560-660×780×110-160		1445117012	1	20	pc.
560-660×930×110-160		1445117014	1	17	pc.

Note:

In the "Size" field, there are given:

- the external dimensions of the cabinet body (the minimum dimension of the mounting recess).

Features:

- height adjustment by means of pull-out cabinet feet from 560 to 660 mm,
- frame height adjustment by means of the masking part from 525 to 550 mm,
- depth adjustment from 110 to 160 mm,
- coin lock,
- white cabinet, colour RAL 9016,
- cabinet has side punches in the form of cut-out shutters,
- 45° bend of the frame edge ensures good flush with the wall surface.

STD - a manifold without additional fixtures, with 1" stop end on one side.

KPL - a manifold with SET-K connection valves and a tee with an air vent and a drain valve in a beam.

+GP H - a manifold with an integrated set-point mixing unit.

KPL +GP 3D - a manifold with a vent and drain valve in a beam, as well as connected mixing pump group with a three-way thermostatic valve.

OPT - a manifold with a built-in vent and drain group, as well as SET-K connection valves.

OPT +GP 3D - a manifold with a built-in vent and drain group, as well as connected mixing pump group with a three-way thermostatic valve.

The drain and vent group should be taken as additional outlet.



Max. number of circuits for RVV manifold (100 mm circuit spacing) are given in brackets.

Code	Type	Brass manifold (Max. number of circuits)				InoxFlow manifold (Max. number of circuits)					
		STD	KPL	+GP H	KPL +GP 3D	STD	KPL	OPT	+GP H	KPL +GP 3D	OPT +GP 3D
1445117024	SWPSE 350	5	-	-	-	5 (3)	-	3 (2)	-	-	-
1445117013	SWPSE 450	7	3	-	2	7 (4)	2 (-)	5 (3)	-	2 (-)	-
1445117011	SWPSE 580	10	6	2	4	9 (5)	5 (3)	7 (4)	-	4 (2)	4 (2)
1445117012	SWPSE 780	12	10	6	8	12 (6)	9 (5)	11 (6)	5 (3)	8 (4)	8 (4)
1445117014	SWPSE 930	12	12	10	12	12 (6)	12 (6)	12 (6)	8 (4)	11 (6)	11 (6)



Frame RAMSE

GROUP: D

Size (H×W) [mm]	*	Code			UM
525-560×350	*	1445096018	2	40	pc.
525-560×450	*	1445096020	2	40	pc.
525-560×580	*	1445096011	2	36	pc.
525-560×780	*	1445096014	2	26	pc.
525-560×930	*	1445096016	2	20	pc.

Note:

In the "Size" field, there are given:

- the dimension of the mounting recess.

Features:

- option to use a frame directly to mask wall recesses without the necessity to use recess mounted cabinets SWPS and SWPSE,
- 150 mm long mounting lugs making it possible to mount the frame directly in the recess,
- dowels for mounting,
- frame height adjustment with a masking part from 525 to 560 mm,
- coin lock,
- white cabinet, colour RAL 9016,
- 45° bend of the frame edge ensures good flush with the wall surface.





 coil  bar  pipes in tube  bag  carton box  pallet  new  available soon

* custom-made - lead time max 4 weeks | ** availability as agreed | *** while stock lasts



Frame RAMS

GROUP: D

Size (H×W) [mm]	*	Code			UM
570-625×350	*	1445096006	2	40	pc.
570-625×450	*	1445096008	2	40	pc.
570-625×580	*	1445096001	2	36	pc.
570-625×780	*	1445096002	2	26	pc.
570-625×930	*	1445096004	2	20	pc.

Note:

In the "Size" field, there are given:

- the dimension of the mounting recess.

Features:

- option to use a frame directly to mask wall recesses without the necessity to use a recess mounted cabinet SWPS and SWPSE,
- 150 mm long mounting lugs making it possible to mount the frame directly in the recess,
- dowels for mounting,
- frame height adjustment with a masking part from 570 to 625 mm,
- coin lock,
- white cabinet, colour RAL 9016,
- 45° bend of the frame edge ensures good flush with the wall surface.



Lock for KAN-therm cabinets and frames

GROUP: D

	*	Code			UM
		2378621001	10	100	pc.


 coil
  bar
  pipes in tube
  bag
  carton box
  pallet
  new
  available soon

* custom-made - lead time max 4 weeks | ** availability as agreed | *** while stock lasts

Installation accessories and fastening elements

Corrugated protecting pipe red

GROUP: A

Size (diametr overall) [mm]	*	Code		UM
12-14 (23)		1700049067	100	m
16-18 (25)		1700049063	50	m
20 (28)		1700049069	50	m
25-26 (35)		1700049065	50	m
32 (43)		1700049071	50	m
40 (50)		1700049073	25	m


Note:

Use in cold and hot potable water installations and central heating as a protecting pipe when pouring concrete over the installation.



Corrugated protecting pipe blue

GROUP: A

Size (diametr overall) [mm]	*	Code		UM
12-14 (23)		1700049068	100	m
16-18 (25)		1700049064	50	m
20 (28)		1700049070	50	m
25-26 (35)		1700049066	50	m
32 (43)		1700049072	50	m
40 (50)		1700049074	25	m


Note:

Use in cold and hot potable water installations and central heating as a protecting pipe when pouring concrete over the installation.



Single plastic mounting plate

GROUP: A

	*	Code			UM
		1700210011	10	160	pc.

Note:

Total length 59 mm, width 43 mm, depth 8 mm.
It makes it possible to install wallplate elbows and tees with a bolt or nut on a wall or in wall grooves.
Do not use in drywall.



Double plastic mounting plate

GROUP: A


Spacing (L) [mm]	*	Code			UM
50		1700210008	10	120	pc.
80		1700210010	10	100	pc.
150		1700210006	10	70	pc.

Plate 50 mm - total length 84 mm, width 43 mm, depth 8 mm.

Plate 80 mm - total length 114 mm, width 43 mm, depth 8 mm.

Plate 150 mm - total length 184 mm, width 43 mm, depth 8 mm.

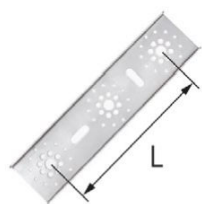
Note:

It makes it possible to install wallplate elbows and tees with a bolt or nut on a wall or in wall grooves.
Do not use in drywall.



 coil  bar  pipes in tube  bag  carton box  pallet  new  available soon

* custom-made - lead time max 4 weeks | ** availability as agreed | *** while stock lasts



Double metal mounting plate

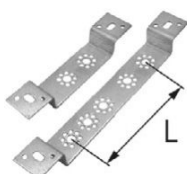
GROUP: A

Spacing (L) [mm]	*	Code			UM
80, 150		1700210014	1	42	pc.

Plate total length 210 mm, width 55 mm, depth 9 mm.

Note:

It allows wall elbows and wall tees with a nut or mounting bolt to be installed on the wall, in wall grooves and drywall. Screws for mounting tap connections included (6 pcs.).



Double metal bent mounting plate

GROUP: A

Spacing (L) [mm]	*	Code			UM
50, 80, 150		1700210002	10	20	pc.
50		1700210013	10	80	pc.

Plate 50, 80, 150 mm - total length 290 mm, width 40 mm, depth 28 mm.

Plate 50 mm - total length 190 mm, width 40 mm, depth 28 mm.

Note:

It makes it possible to install wallplate elbows and tees with a bolt or nut on a wall, in wall grooves and drywall.



Single plastic hook for pipes

GROUP: A

Size [mm]	*	Code			UM
12-20 / 12-26 L = 48, Ø8		1700112010	100	5000	pc.
12-20 / 12-26 L = 77, Ø8		1700112012	100	4000	pc.
12-20 / 12-26 L = 100, Ø10		1700112015	100	3000	pc.

Note:

L = hook length

Ø = drill bit diameter for making a hole to mount the hook.

Pipe dimensions with/without corrugated protection are given.



Single polyamide hook for pipes

GROUP: A

Size [mm]	*	Code			UM
12-20 / 12-26 L = 80, Ø10		1700112017	100	4000	pc.

Note:

L = hook length

Ø = drill bit diameter for making a hole to mount the hook.

Pipe dimensions with/without corrugated protection are given.



Double plastic hook for pipes

GROUP: A

Size [mm]	*	Code			UM
12-20 / 12-26 L = 48, Ø8		1700112000	100	3000	pc.
12-20 / 12-26 L = 77, Ø8		1700112003	100	2500	pc.
12-20 / 12-26 L = 100, Ø10		1700112005	100	2000	pc.

Note:

L = hook length

Ø = drill bit diameter for making a hole to mount the hook.

Pipe dimensions with/without corrugated protection are given.

coil
 bar
 pipes in tube
 bag
 carton box
 pallet
 new
 available soon

* custom-made - lead time max 4 weeks | ** availability as agreed | *** while stock lasts

Double polyamide hook for pipes

GROUP: A

Size [mm]	*	Code			UM
12-20 / 12-26 L = 80, Ø10		1700112007	100	2000	pc.

Note:

L = hook length
 Ø = drill bit diameter for making a hole to mount the hook.
 Pipe dimensions with/without corrugated protection are given.



Single snap-in pipe clip

GROUP: A

Size [mm]	*	Code			UM
16-18	*	1700107003	100	1000	pc.

Note:

Clips make it possible to fasten pipes laid without the corrugated protection.



Double snap-in pipe clip

GROUP: A

Size [mm]	*	Code			UM
16-18	*	1700107002	100		pc.

Note:

Clips make it possible to fasten pipes laid without the corrugated protection.



Single masking Ø15

GROUP: A

	*	Code			UM
		1700183008	100	1000	pc.

Note:

Use as a masking element of a pipe protruding from the floor.



Double masking Ø15

GROUP: A

	*	Code			UM
		1700183007	50	500	pc.

Note:

Use as a masking element of pipes protruding from the floor.



coil
 bar
 pipes in tube
 bag
 carton box
 pallet
 new
 available soon

* custom-made - lead time max 4 weeks | ** availability as agreed | *** while stock lasts



Single pipe clamp with rubber insert

GROUP: A

Size [mm]	*	Code		UM
15-18		1700081025	100	pc.
20-23		1700081028	100	pc.
25-28		1700081029	100	pc.
32-36		1700081030	50	pc.
40-44		1700081031	50	pc.
47-52		1700081032	50	pc.
54		1700081033	50	pc.
57-63		1700081034	50	pc.
74-78		1700081035	25	pc.
85-91		1700081036	25	pc.
108-112		1700081023	25	pc.
139	**	1700081024	10	pc.
168	**	1700081027	10	pc.

Note:

The clamp has a double-threaded screw with a collar (8x70) a plastic dowel (Ø12) in the set.



Double pipe clamp with rubber insert

GROUP: A

Size [mm]	*	Code		UM
15-18		1700081019	-	50 pc.
20-23		1700081020	-	50 pc.
25-28		1700081021	-	50 pc.
32-36		1700081022	1	50 pc.

Note:

The clamp has a double-threaded screw with a collar (8x70) a plastic dowel (Ø12) in the set.



Plastic hinged pipe clip

GROUP: A

Size [mm]	*	Code		UM
16		1700029003	50	pc.
20		1700029005	50	pc.
25		1700029007	50	pc.
32		1700029009	50	pc.

Note:

Use only as a sliding point.



Plastic end cap for pressure test red

GROUP: A

Size	*	Code		UM
G½"		1700250003	20	360 pc.
G¾"	*	1700250007	20	360 pc.

Note:

The end cap has its O-Ring seal and can be used many times.

coil
 bar
 pipes in tube
 bag
 carton box
 pallet
 new
 available soon

* custom-made - lead time max 4 weeks | ** availability as agreed | *** while stock lasts

Plastic end cap for pressure test blue

GROUP: A

Size	*	Code			UM
G1/2"		1700250005	20	360	pc.
G3/4"	*	1700250008	20	360	pc.

Note:

The end cap has its O-Ring seal and can be used many times.



Antifreeze agent for installation

GROUP: A

Version	*	Code		UM
-20 °C - 20 l	*	1800002002	1	pack.
-25 °C - 20 l	*	1800002003	1	pack.
-35 °C - 20 l	*	1800002004	1	pack.

Note:

Use for central heating, air-conditioning, cooling and solar installations.



Pipes mounting clip

GROUP: A

Size [mm]	*	Code			UM
12-18 / 16-26		1700107005	50	1000	pc.
16-32 / 25-40		1700107006	40	400	pc.

Note:

Use to properly secure the pipe and corrugated pipe to the substrate.

The first range is for pipes with corrugated protection, the second for pipes without corrugated protection.



Plastic bend support

GROUP: A

Size [mm]	*	Code			UM
- / 14-18		1700218003	200		pc.
12-14 / 20		1700218000	100		pc.
12-18 / 25		1700218004	80		pc.

Note:

The first range is for pipes with corrugated protection, the second for pipes without corrugated protection.



Metal bend support

GROUP: A

Size [mm]	*	Code			UM
12-18		1700164000	120		pc.
25-26		1700164002	50		pc.
32-40		1700164003	50		pc.



coil
 bar
 pipes in tube
 bag
 carton box
 pallet
 new
 available soon

* custom-made - lead time max 4 weeks | ** availability as agreed | *** while stock lasts



Plastic elbow

GROUP: A

Size [mm]	*	Code		UM
14-18		1700107000	100	pc.

Note:
Use for connecting the pipe to a radiator (lay in concrete).



Plastic pipe end cap

GROUP: A

Size [mm]	*	Code		UM
14-18		1700107001	100	pc.

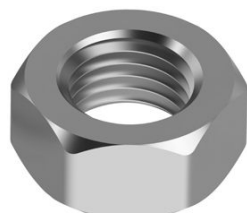


Plastic male stop end for leak tests

GROUP: A

Size	*	Code		UM
G1/2"		1700250001	20 300	pc.

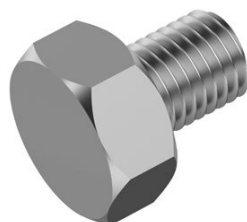
Note:
The plastic stop end is intended only for the leak test of the installation.
The stop end has its O-Ring seal.



Nut - M8

GROUP: A

Size [mm]	*	Code		UM
M8		1728177000	5000	pc.



Mounting bolt

GROUP: A

Size [mm]	*	Code		UM
M8		1700183012	100 2000	pc.

Note:
It connects the mounting plate with wallplate elbows and tees.



Freeze-proof garden tap

GROUP: A

	*	Code		UM
		1709277001	1	pc.

Note:
Executive element DN15. Connections to the frost-resistant tap from the installation side R 3/4"; from the outlet male 3/4".

coil
 bar
 pipes in tube
 bag
 carton box
 pallet
 new
 available soon

* custom-made - lead time max 4 weeks | ** availability as agreed | *** while stock lasts



Disassembly lever for freeze-proof garden tap

GROUP: K

*	Code		UM
	2128183623	1	pc.



 coil  bar  pipes in tube  bag  carton box  pallet  new  available soon

* custom-made - lead time max 4 weeks | ** availability as agreed | *** while stock lasts

Complete multipurpose installation system consisting of state-of-the-art, mutually complementary technical solutions for pipe water distribution installations, heating installations, as well as technological and fire extinguishing installations.

ultra**LINE**

ultra**PRESS**

PP

Steel

Inox

Groove

Copper, Copper Gas

XPress Sprinkler

**Surface heating and cooling,
automation**

**Football
Stadium installations**

**Cabinets
and manifolds**

